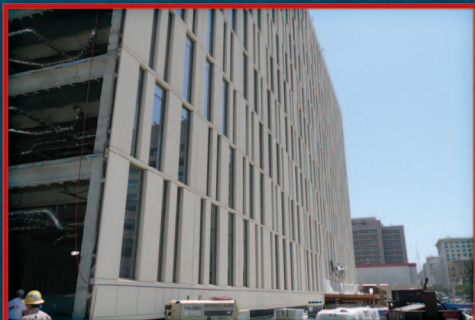


**COREBRACE™**  
SUPERIOR SEISMIC PERFORMANCE

## LOS ANGELES POLICE HEADQUARTERS



### LOS ANGELES, CALIFORNIA

The Los Angeles Police Headquarters was constructed to withstand high seismic activity. CoreBrace™ incorporated 182 CoreBrace™ buckling restrained braces that are proven to be the leading product in seismic performance. This complex structure required the highest standards of workmanship. Safety and structural reliability are hallmarks of CoreBrace™.

### PROJECT INFORMATION

<b>Location:</b>	Los Angeles, California
<b>Number of Stories:</b>	10 Stories
<b>Number of Braces:</b>	182
<b>Maximum Brace Force:</b>	Pysc = 851 kips
<b>Structural Engineer:</b>	Nabih Youssef Associates
<b>Steel Fabricator &amp; Erector:</b>	Strocal Inc.

5789 WEST WELLS PARK ROAD  
WEST JORDAN, UT 84081

WWW.COREBRACE.COM

PHONE 801.280.0701  
FAX 801.280.3231